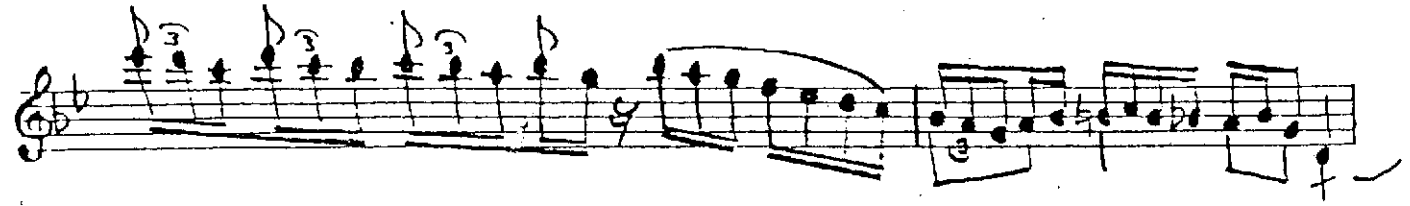


Makam: Değişmeli
Usul: Değişmeli

Annabell Lee RAST

Beste: EROL SAYAN
Göz: Edgar Allen Poe
Çeviren: Melih Cevdet Anday

(1=82) Giriş Müziği (introduction)



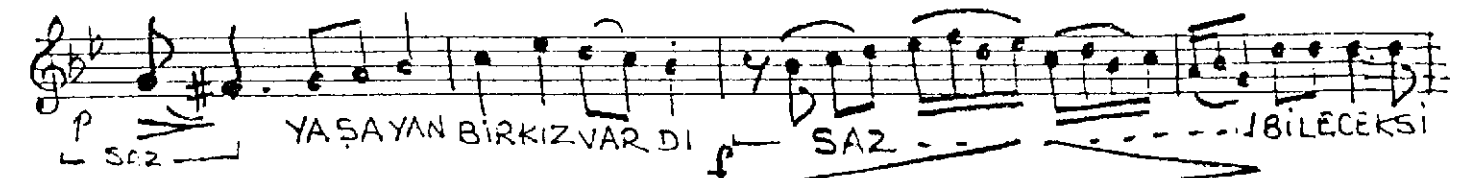
SENELER CE SAZ SENELERCE EV VEL Dİ



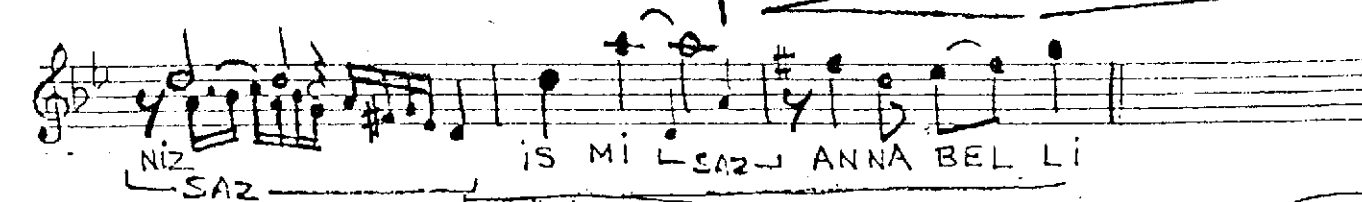
BİR DENİZÜL KE SİN DE SAZ f p



SAZ - - - -



SAZ YASA YAN BİR KIZ VAR Dİ SAZ - - - - BİLECEK Sİ



NİZ SAZ İS Mİ SAZ ANNA BEL Lİ



SAZ - - - -



Annabell-Lee.....

(CANLI) HİÇ BİR ŞEY SAZ DÜŞÜN MEZ Dİ SEVİLMekten SEV ... MEKTEN

BAŞ KA BENİ SAZ O ÇOCUK SAZ
Allegro (Azz.) (Konuşur gibi)

BEN ÇO ÇUK — SAZ — İMEMLE KETİ MİZ — SAZ — O DENİZ... ÜLKESİY Dİ

[illegible]

SEV DA LI DE GİL (Y) SAR KA RA SEV DA LI Y DI K SAR

Handwritten musical notation for the song "BEN VE AN-NA BEL LI SAZ". The notation is on a single staff with a treble clef and a key signature of one flat (B-flat). The time signature is 4/4. The melody is written in a simple, folk-like style with many beamed eighth and sixteenth notes. The lyrics are written below the staff: "BEN VE AN-NA BEL LI SAZ". The word "SAZ" is followed by a long horizontal line, indicating a sustained note or a long instrumental part.

GÜK LERDEÜÇAN MELEK LERBİ LE — SAZ — — — — KISKANIRLAR

DI BI ZI SAZ



 BUYÜZ DEN GÖZE GEL Dİ O DE NİZÜL KESİN DE

Handwritten musical notation for the first staff of the piece. The notation is in treble clef and 2/4 time. It begins with a piano (P) dynamic marking and a tempo instruction "Rit. (Ritardando) Çekerek". The melody consists of eighth and sixteenth notes. Above the staff, the text "...Annabell-lee..." is written. The staff ends with a fermata over a whole note, followed by a tempo change to "Moderato (orta hız)".

[illegible]

Accelerando (Accol.) hızlanarak

Handwritten musical notation for the first system of 'The Rose Tree'. The notation is on a single staff with a treble clef and a key signature of one flat (B-flat). The melody begins with a quarter note G4, followed by a half note A4, and then a quarter note B4. A slur covers the next four notes: a quarter note C5, a quarter note D5, a quarter note E5, and a quarter note F5. The system ends with a double bar line.

Handwritten musical notation on a single staff. The notation includes a treble clef, a key signature of one flat (B-flat), and a common time signature (C). The melody consists of several measures, including a double bar line and a repeat sign. The notes are mostly quarter and eighth notes. The piece concludes with a double bar line. Below the staff, there is a handwritten instruction: "ff All. (Allegro) (Koro) A...".

Handwritten musical score for 'The Rose Tree'. The score is written on a single staff with a treble clef and a key signature of one flat (B-flat). The melody is written in a simple, folk-like style. The lyrics are written below the staff, with some words in parentheses. The tempo is marked 'Allegretto' and the dynamics are 'mf' (mezzo-forte) and 'f' (forte). The score includes a repeat sign and a first ending bracket.

Handwritten Musical Score for "The Rose Tree"

Staff: Treble clef, Key signature: one flat (B-flat). The melody is written in a simple, folk-like style.


Lyrics:

The Rose Tree (The Rose Tree)
 The Rose Tree (The Rose Tree)
 The Rose Tree (The Rose Tree)
 The Rose Tree (The Rose Tree)

Tempo: Allegretto

Dynamics: mf, f

Structure: The score includes a repeat sign and a first ending bracket.



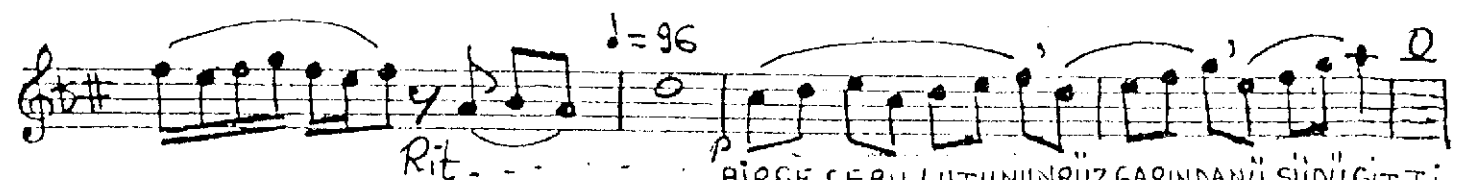
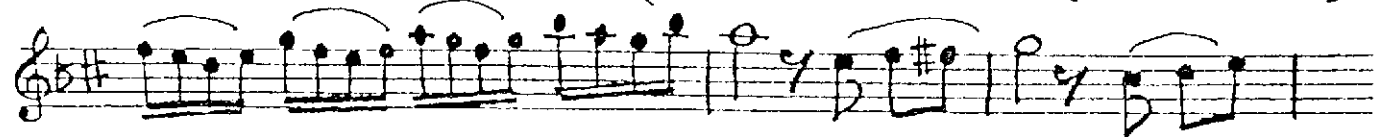
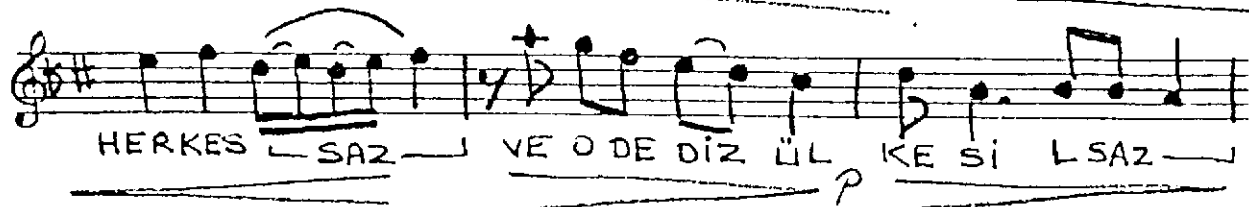
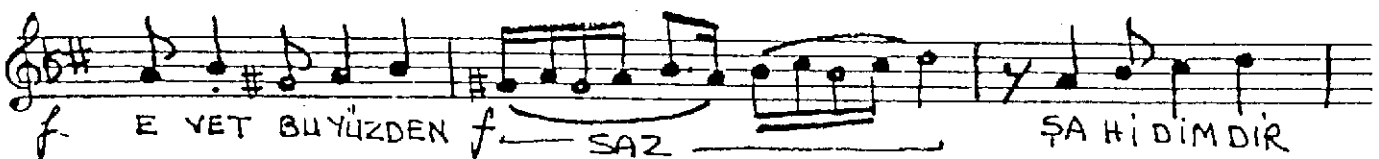
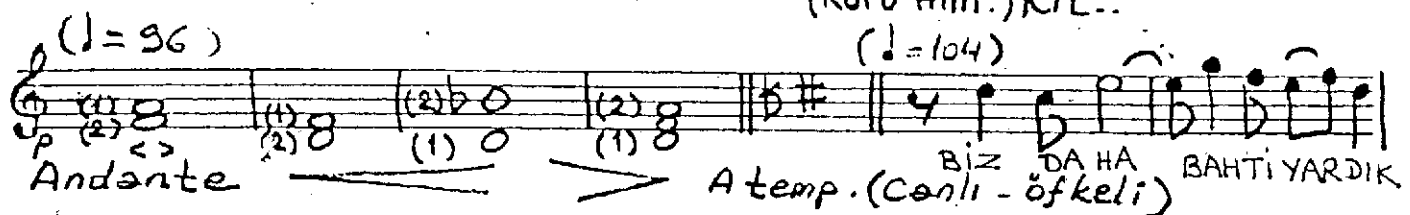
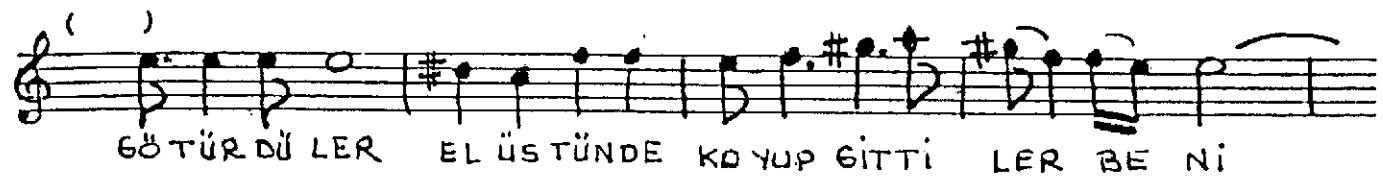
Andante (♩ = 96)

ÜŞÜDÜ ... RÜZGARINDAN BİR ... BULUTUN SAZ
(Koro (H.m.) a)

Handwritten musical notation for the first staff, featuring a treble clef, a key signature of one sharp (F#), and a tempo marking of $(\text{♩} = 90)$. The melody is written on a five-line staff with various note values and rests. Below the staff, the lyrics "GÜZELİM - SAZ - AN NABELLI" are written in a stylized, handwritten font.

Andante - Cantabile (Agir ve Soylergiz)
- SAZ - Uzun sesler, tona (Him) la.

Annabell-Lee



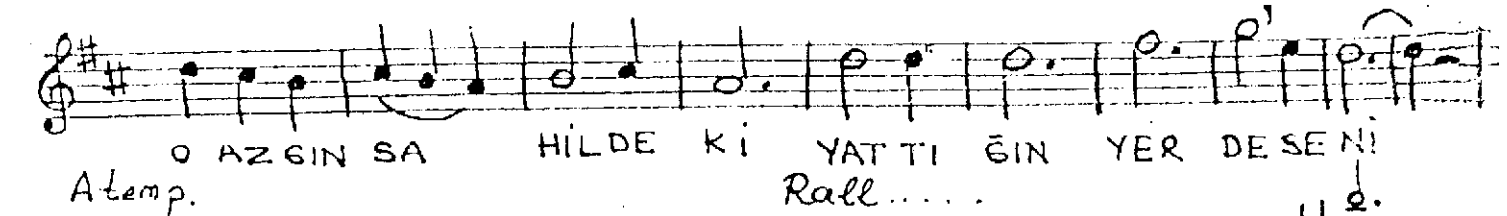
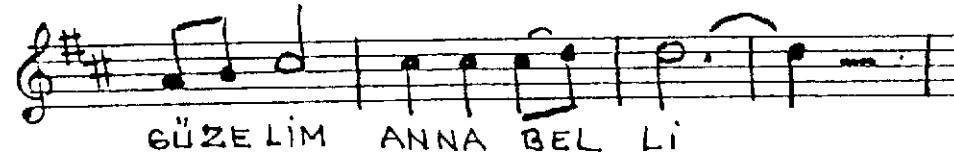
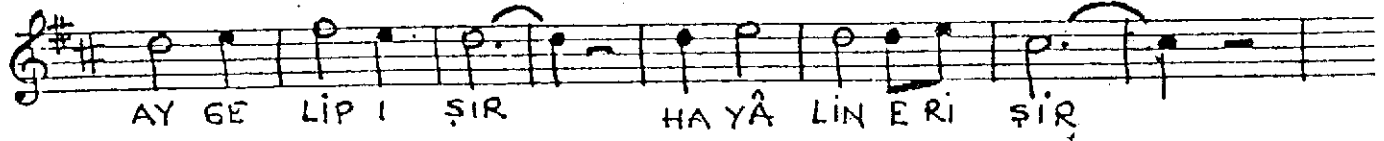
Annabell-lee.

()
 P AN NA BEL Lİ (SAZ ve Koro Hım'la)-
 Rall... -A temp - Rit...
 Andante (♩=96)
 f p < f > p < f > p < f > p

III. Animato (Canlı, ♩=120)
 SEVDADAN YANA KİM OLURSA OLSUN YAŞCABAŞCA İLERİ SAZ
 GE ÇEMEZLERDİ BİZİ SAZ NE YEDİKAT SAZ
 GÖKLER DEKİ MELEK LER SAZ NE DENİZDİ Bİ
 CİN LE Rİ SAZ... 8...

Andante (♩=94)
 Rit... p HIÇ BİRİ AYIRAMAZ SENİ BENDEN
 mf GÜZELİM SAZ AN NA BEL Lİ SAZ
 Koro - Hım'la -
 Rit...

(1=132) Semaî



SON

Senelerce, senelerce sevildi;
O deniz ülkesinde
Yaşayan bir kız vardı, bileceksiniz
İsmi Annabel Lee;
Hiçbir şey düşünmezdi sevimlikten
Sevmekten başka beni.

O çocuk, ben çocuk, memleketimiz
O deniz ülkesiydi.
Sevdalı değil karasevdalıydık
Ben ve Annabel lee;
Göklere uçan melekler bile
Kıskanırlardı bizi.

Bir gün işte bu yüzden göze geldi,
O deniz ülkesinde,
Üşüdü rüzgârından bir bulutun
Güzelim Annabel lee;
Götürdüler el üstünde
Korun gittiler beni
Mezarı oradadır şimdi,
O deniz ülkesinde.

Ez daha bahtıyardık meleklerden
Onlar kıskandı bizi,
Evet, -bu yüzden, şahidimdir herkes
Ve o deniz ülkesi
Bir gece bulutunun rüzgârından
Üşüdü gitti Annabel lee.

Sevdadan yana, kim olursa olsun,
Yaşça başça ileri
Gecemezlerdi bizi;
Ne yedi kat göklendeki melekler,
Ne deniz dibi cinleri,
Hiçbiri ayıramaz beni senden
Güzelim Annabel lee...

Ay gelip ıssır, hayâlin erişir Güzelim Annabel lee.
Bu yıldızlar gözlerin gibi varlar Güzelim Annabel lee;
Orada gecelerim, uzanır beklerim
Sevgilim, sevgilim, hayatım, gelinim
O azgın sahildeki yattığın yerde seni....